



# Lyndon Farms

The Estate Office, Church Road, Lyndon, Oakham, Rutland LE15 8TU



## 23.5 Hectares (58 Acres) Pasture Land For Rent - £POA

Due to a late cancellation, three separate areas of productive pasture land are immediately available around Lyndon, a quiet village located just south of Rutland Water.

Block One = 13.05ha    Block Two = 5.50ha    Block Three = 4.98ha.

Fenced boundaries secure the easily accessible fields. All blocks have supplied water troughs, and block one is grazable in up to three separate parcels.

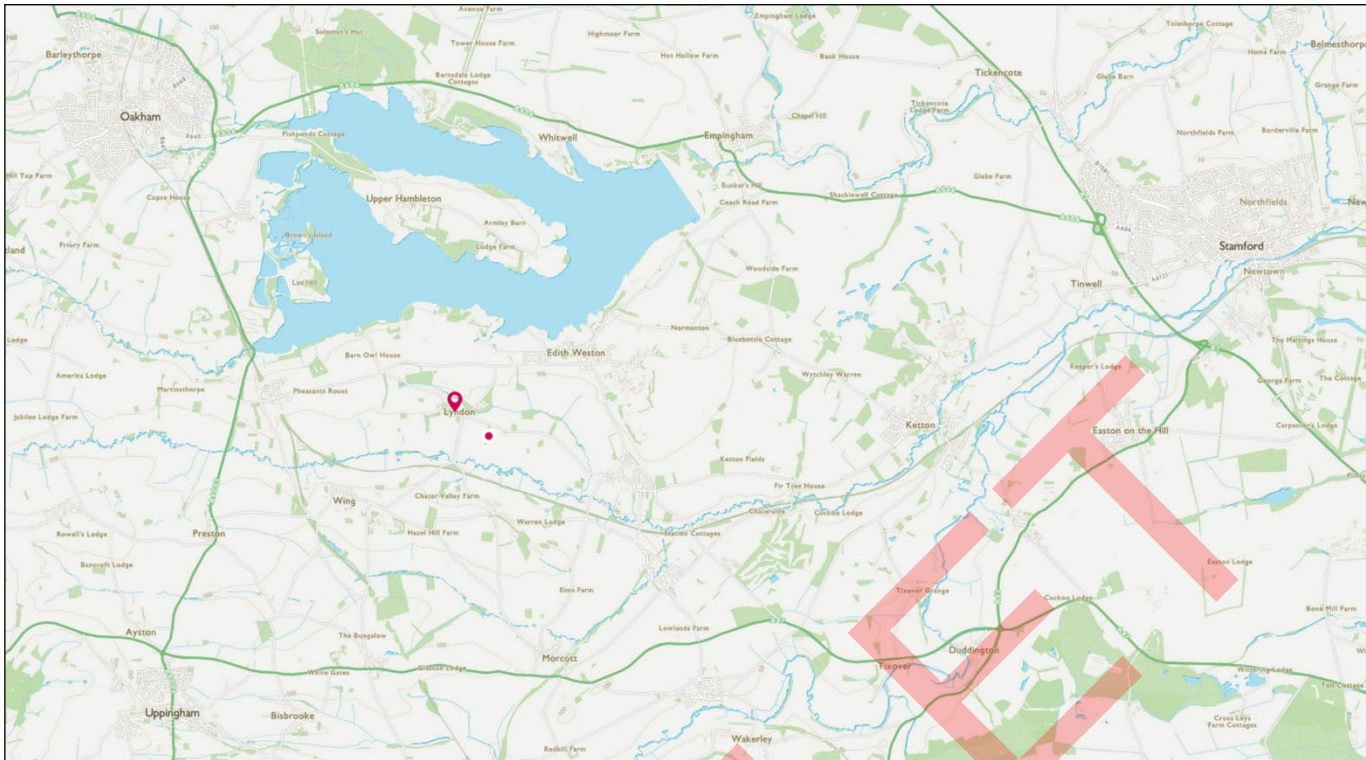
To be let under licence on terms to be agreed through until 31<sup>st</sup> October 2021. Please note that Mid-Tier Countryside Stewardship at GS2 level applies to blocks one and two.

Contact The Estate Office for further information and to arrange a viewing.

THE ESTATE OFFICE, LYNDON HALL, LYNDON, OAKHAM, RUTLAND LE15 8TU  
01572 737786    LYNDON-ESTATE.CO.UK    OFFICE@LYNDON-ESTATE.CO.UK

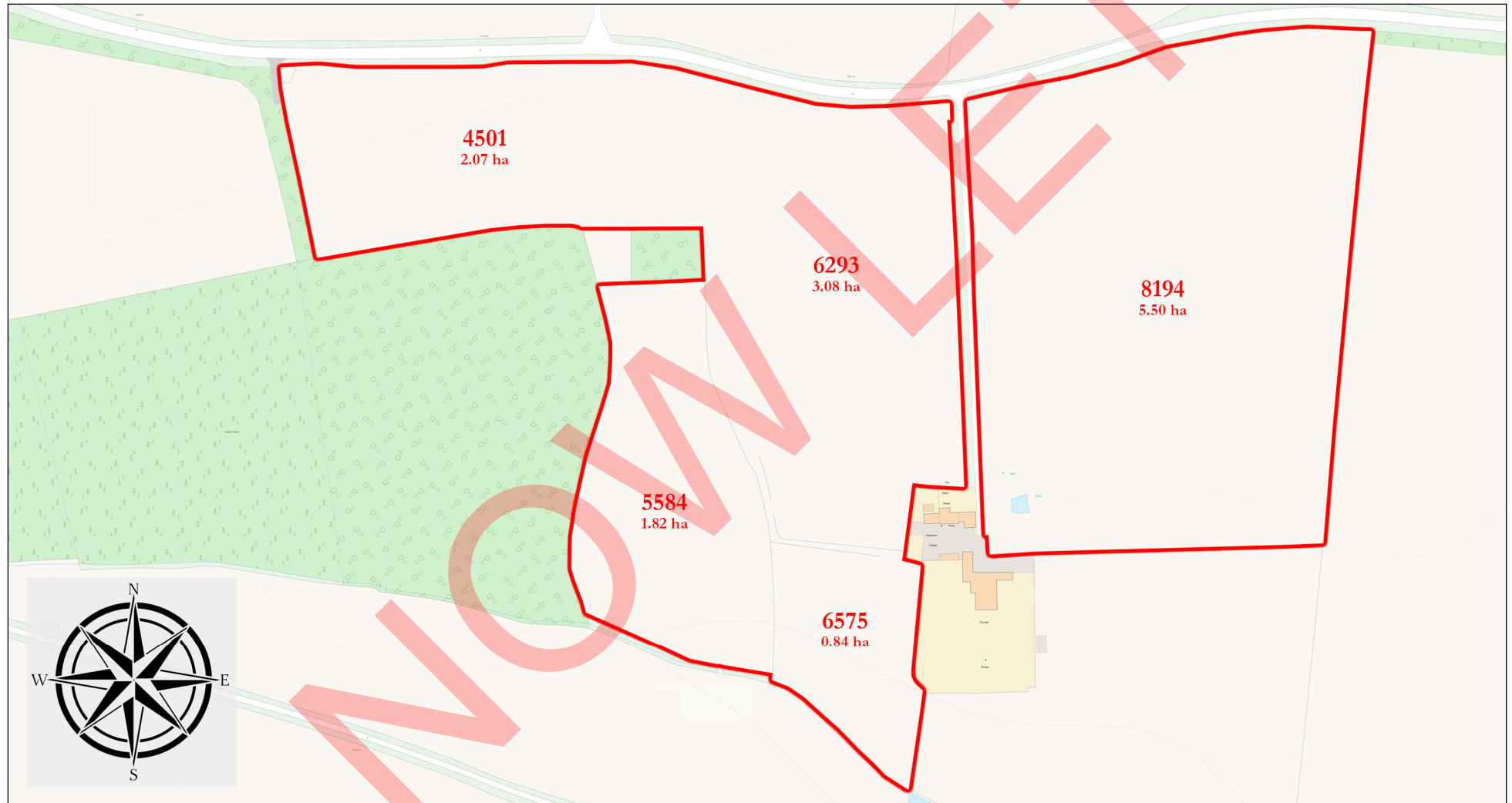


Location



# LYNDON FARMS

THE ESTATE OFFICE, LYNDON HALL, OAKHAM, RUTLAND LE15 8TU  
01572 737786 LYNDON-ESTATE.CO.UK OFFICE@LYNDON-ESTATE.CO.UK

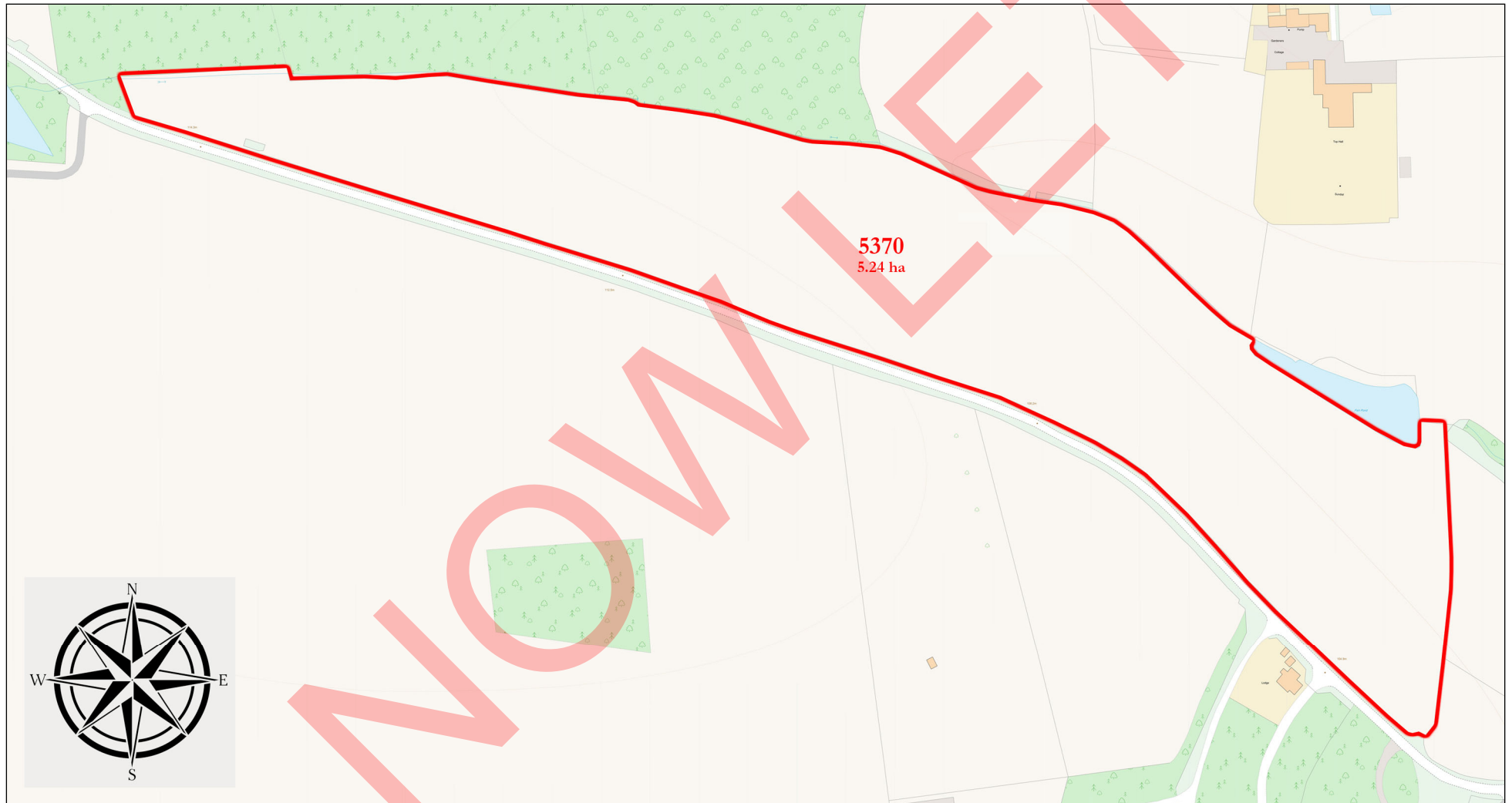


This plan is intended for identification purposes only and is not to scale.



# LYNDON FARMS

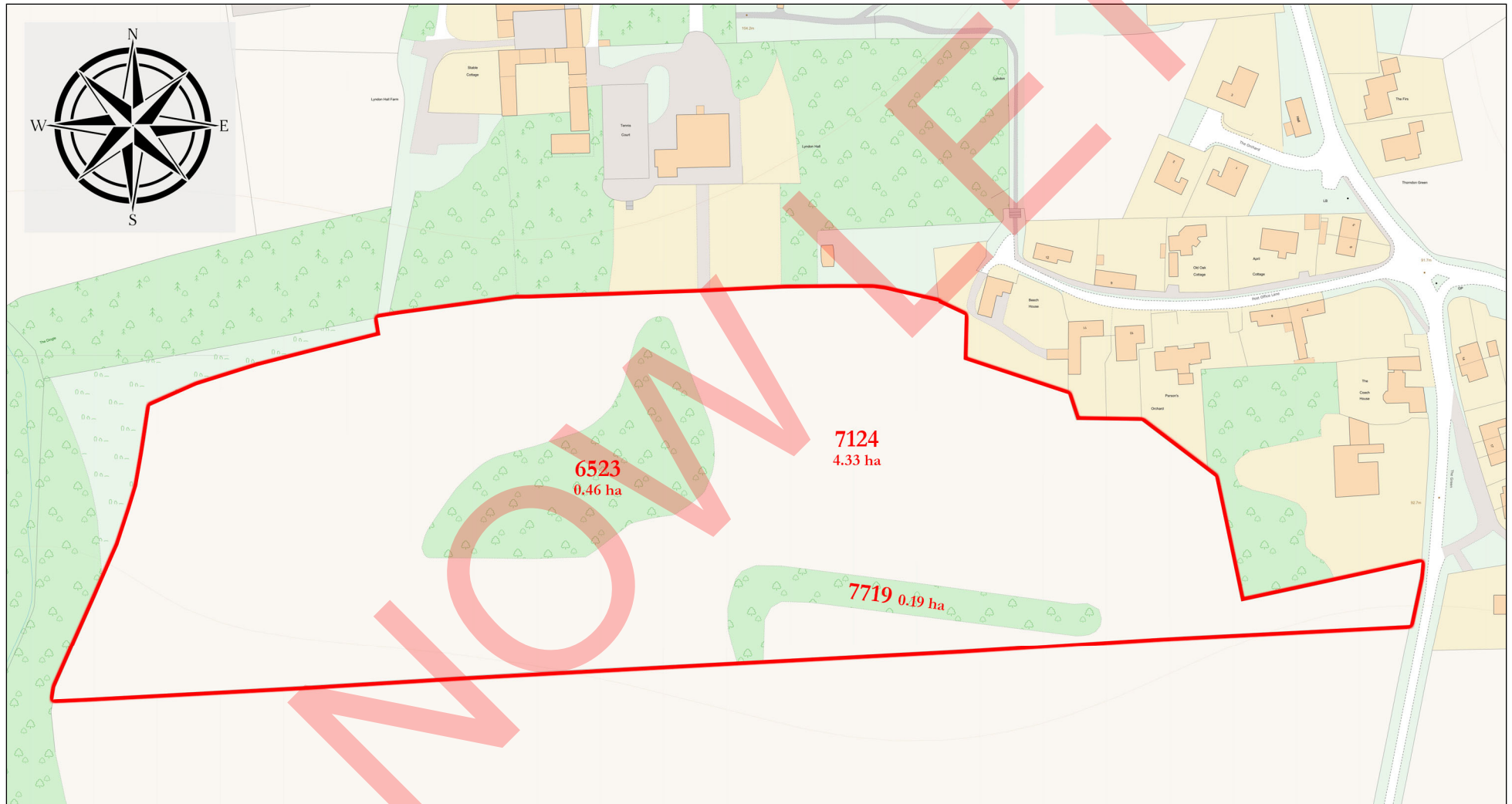
THE ESTATE OFFICE, LYNDON HALL, OAKHAM, RUTLAND LE15 8TU  
01572 737786 LYNDON-ESTATE.CO.UK OFFICE@LYNDON-ESTATE.CO.UK



This plan is intended for identification purposes only and is not to scale.

# LYNDON FARMS

THE ESTATE OFFICE, LYNDON HALL, OAKHAM, RUTLAND LE15 8TU  
01572 737786 [LYNDON-ESTATE.CO.UK](http://LYNDON-ESTATE.CO.UK) [OFFICE@LYNDON-ESTATE.CO.UK](mailto:OFFICE@LYNDON-ESTATE.CO.UK)



This plan is intended for identification purposes only and is not to scale.